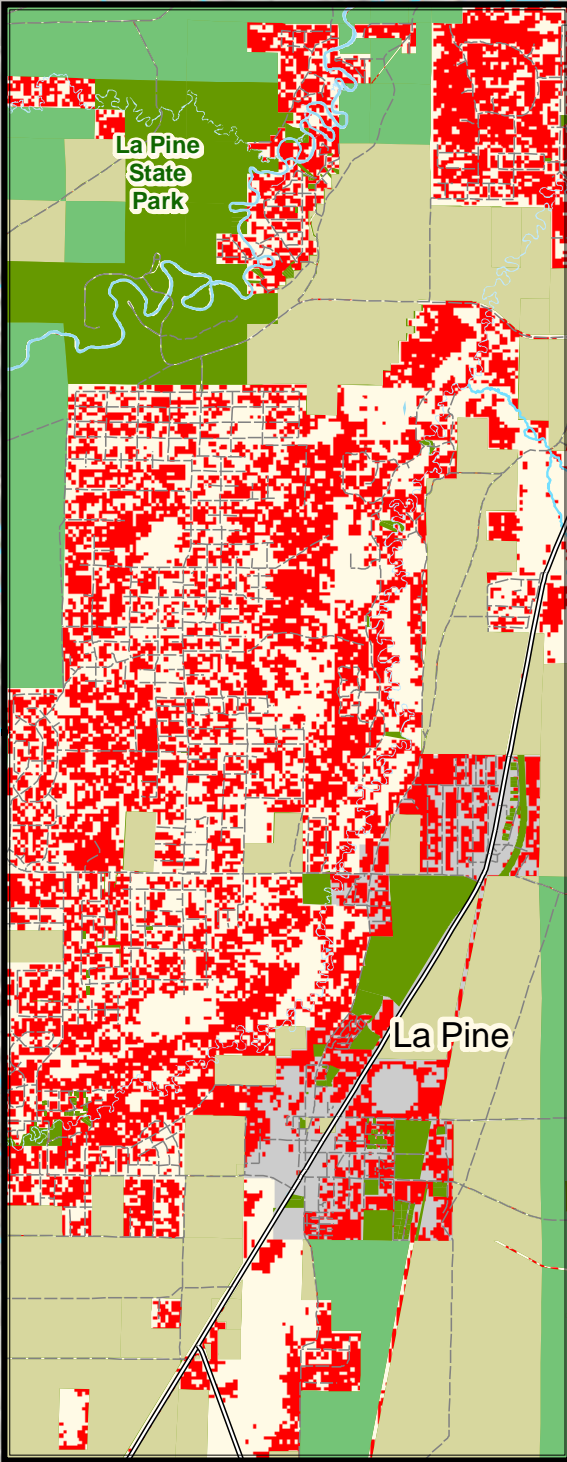
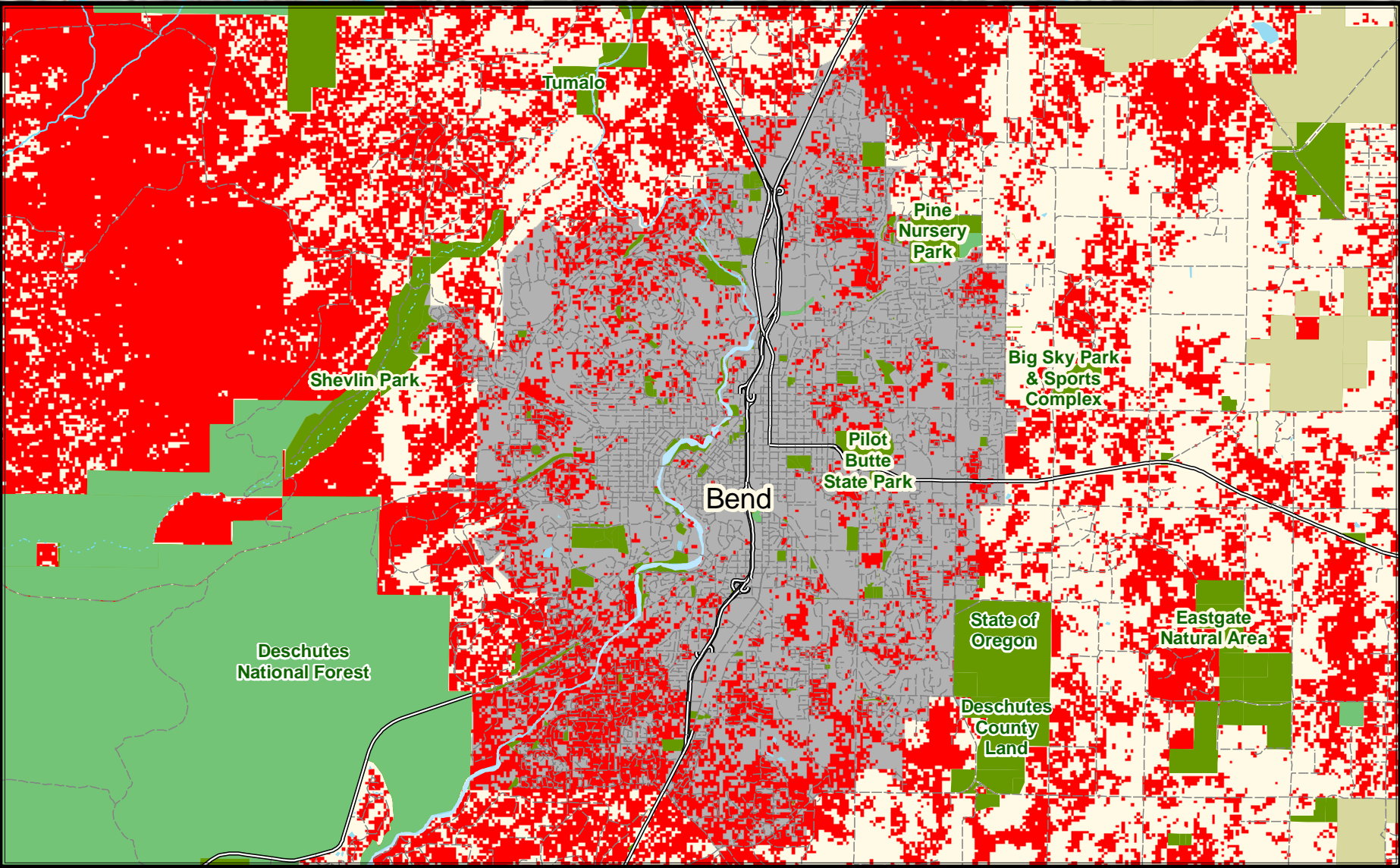
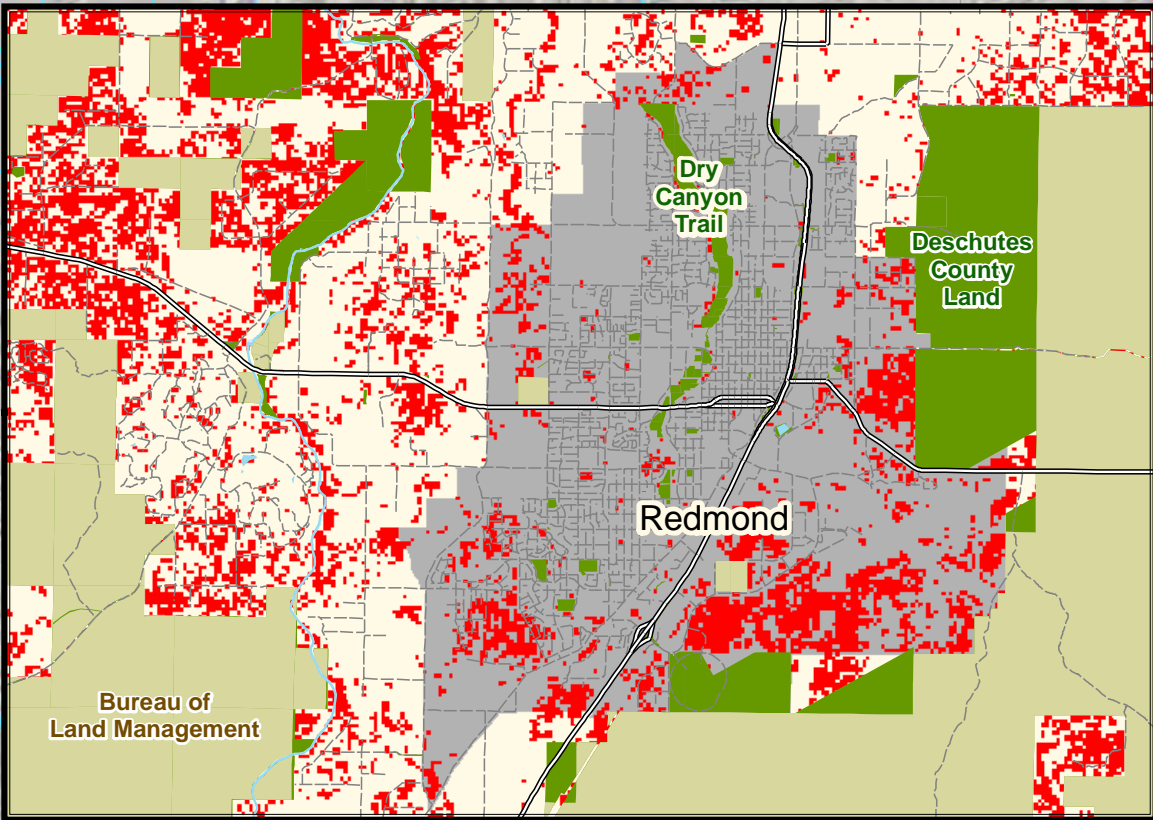
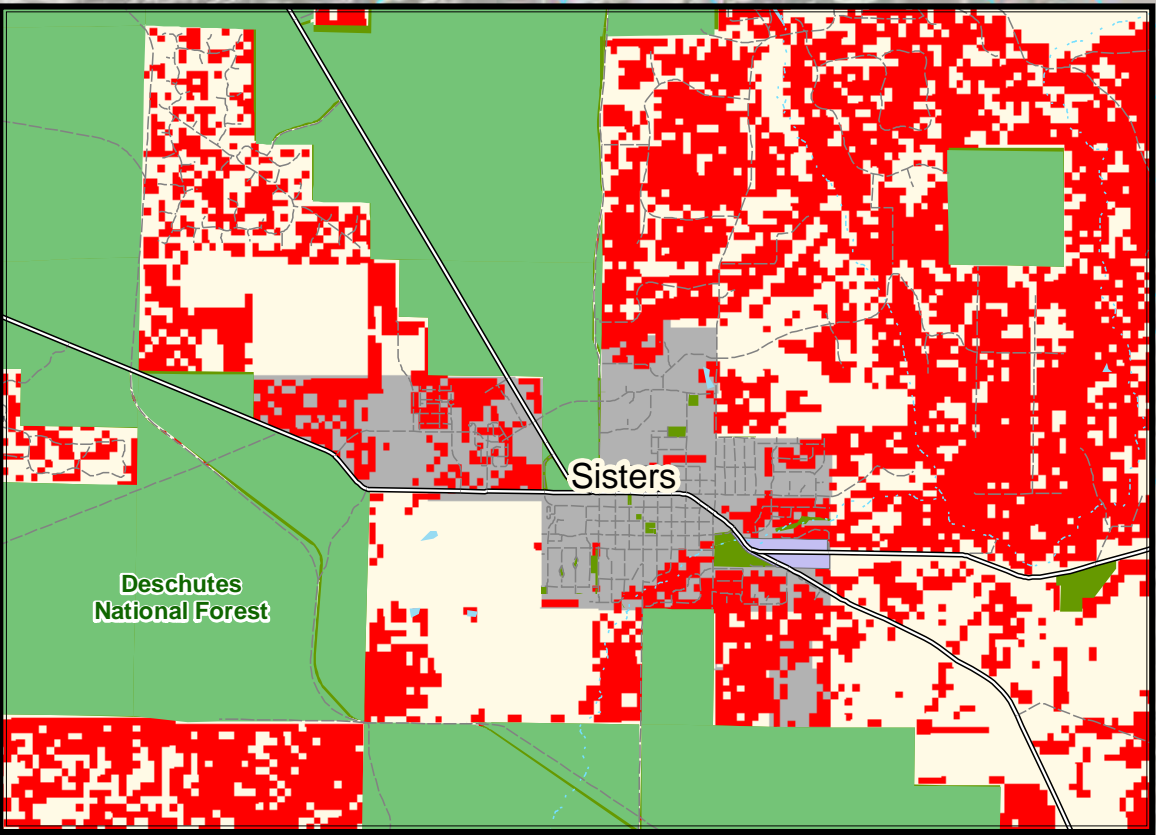
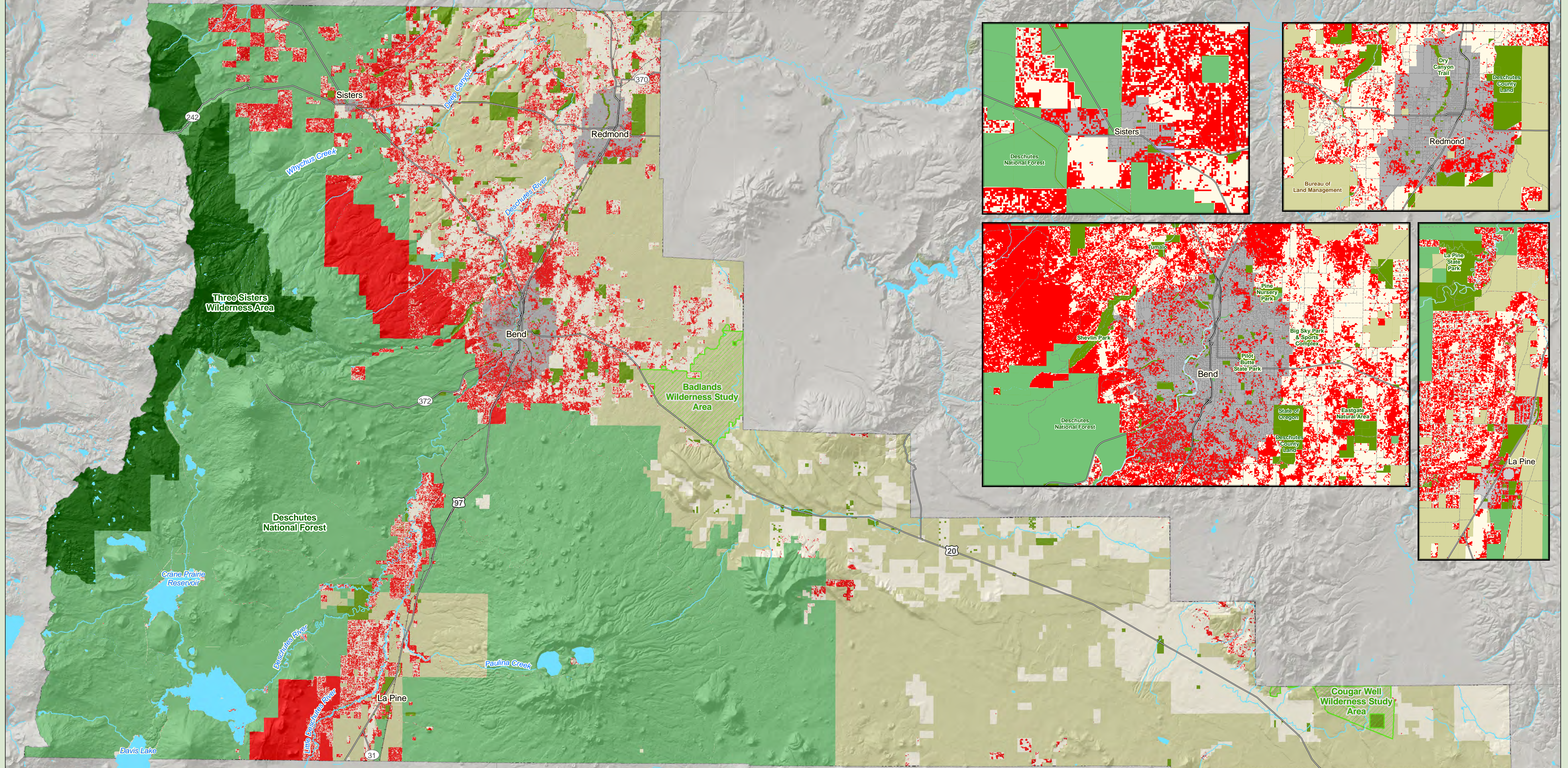


Greenprint for Deschutes County

Protect Forest Lands



Legend

Protect Forest Lands
Priorities
■ High Priority

Managed Land
■ Public Land**
■ Bureau of Land Management
■ US Forest Service
■ Wilderness Area
■ Wilderness Study Area
■ Urban Growth Boundary

Water Features
■ Lake
■ Perennial River
■ Intermittent Stream
■ Highway
■ Railroads

0 2.5 5 10 Miles

N

** Public Land are areas managed by city, county and state agencies. This includes Bend Parks and Rec, City of Sisters, City of Redmond, La Pine Parks and Rec, Central Oregon Parks and Rec, Deschutes County, and multiple agencies for the State of Oregon excluding Department of State Lands. Also included are easements held by Deschutes Land Trust.

This map displays priority areas for the Protect Forest Lands goal in the Greenprint for Deschutes County. Areas across the county were evaluated on a 5 point priority scale, however, due to the nature of the criteria results, all areas identified are considered high priority. All other areas are not considered a priority for this goal.

These priorities are the result of a weighted analysis on the following criteria:

Identify Forest on Private Land	35 %
Protect Large Contiguous Forest Areas	35 %
Industrial Forests	30 %

Map created by the Trust for Public Land on June 9, 2010

Created in ArcMap 9.3®
Map Projection: NAD 1983 State Plane Oregon
South FIPS 3602 Feet Intl

TPL, The Trust for Public Land, and The Trust for Public Land logo are trademarks of The Trust for Public Land.
Copyright © 2010 The Trust for Public Land.
www.tpl.org

Information on this map is provided for purposes of discussion and visualization only.

