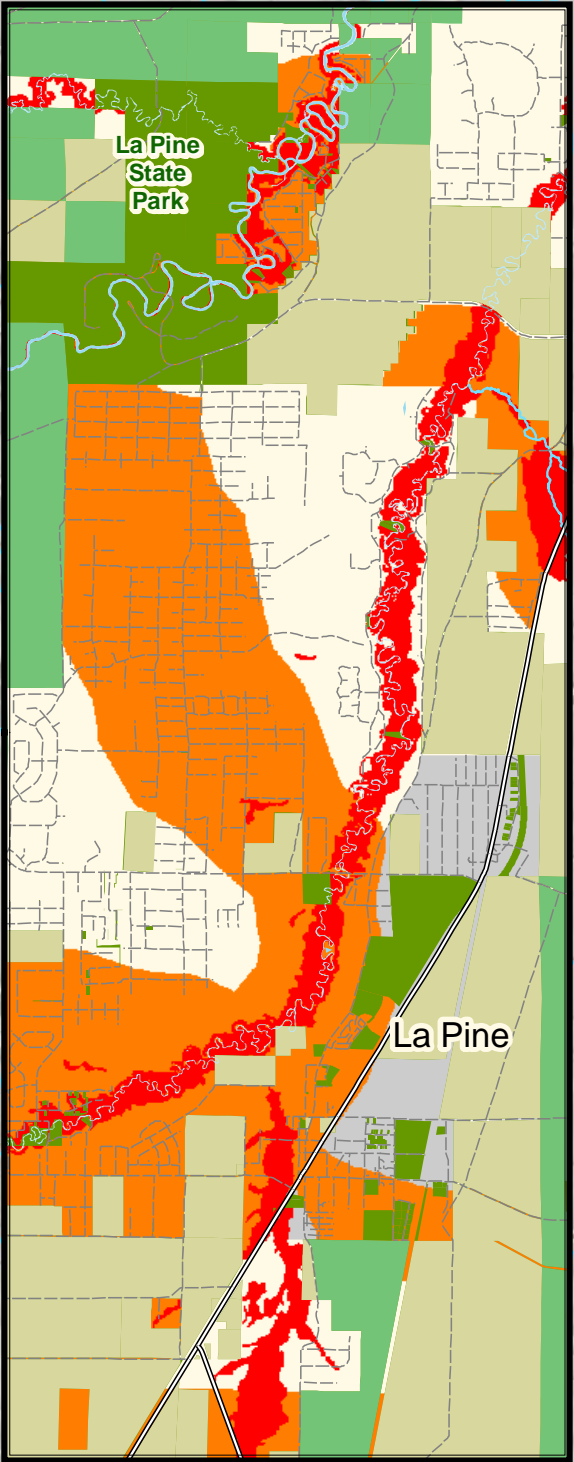
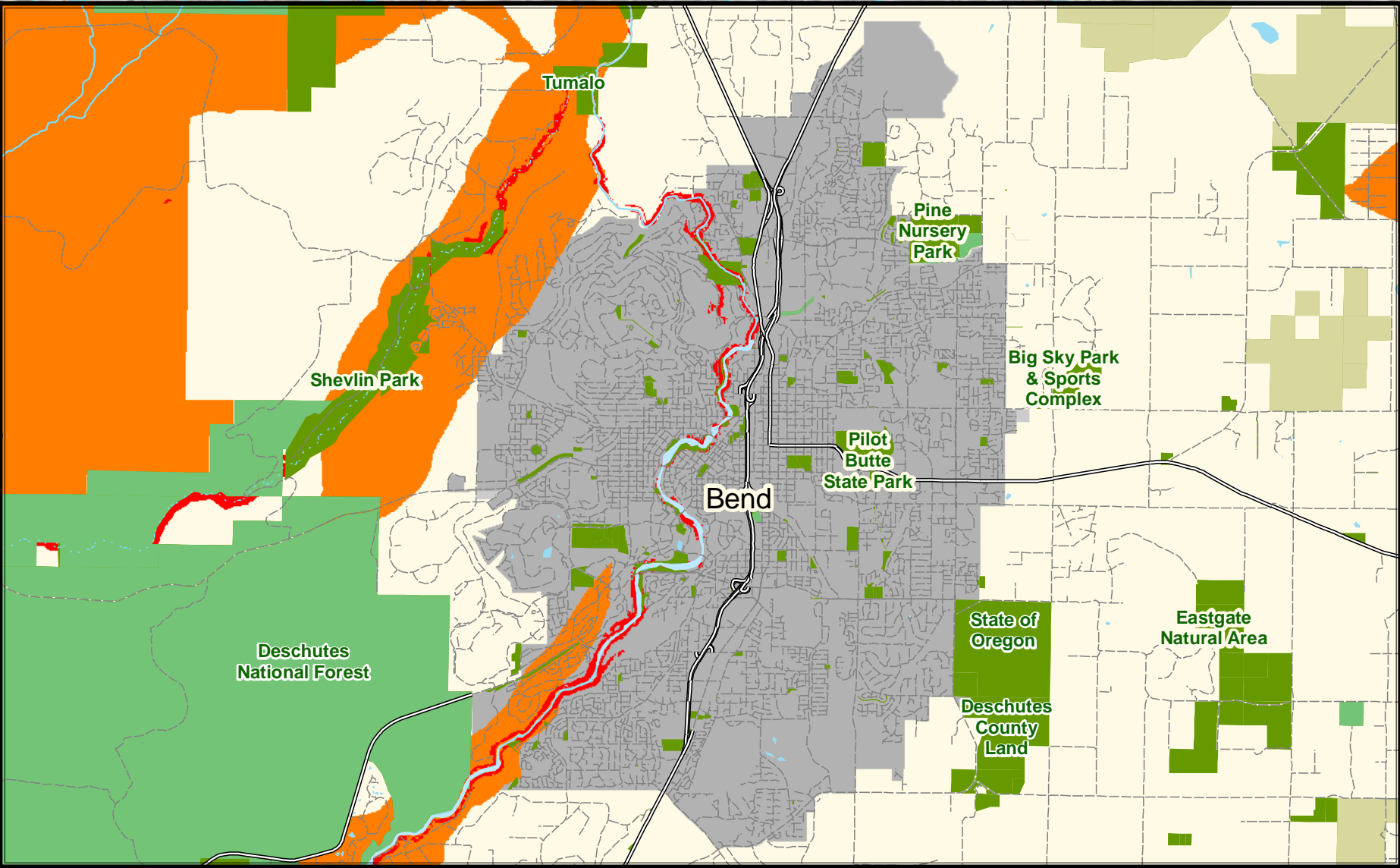
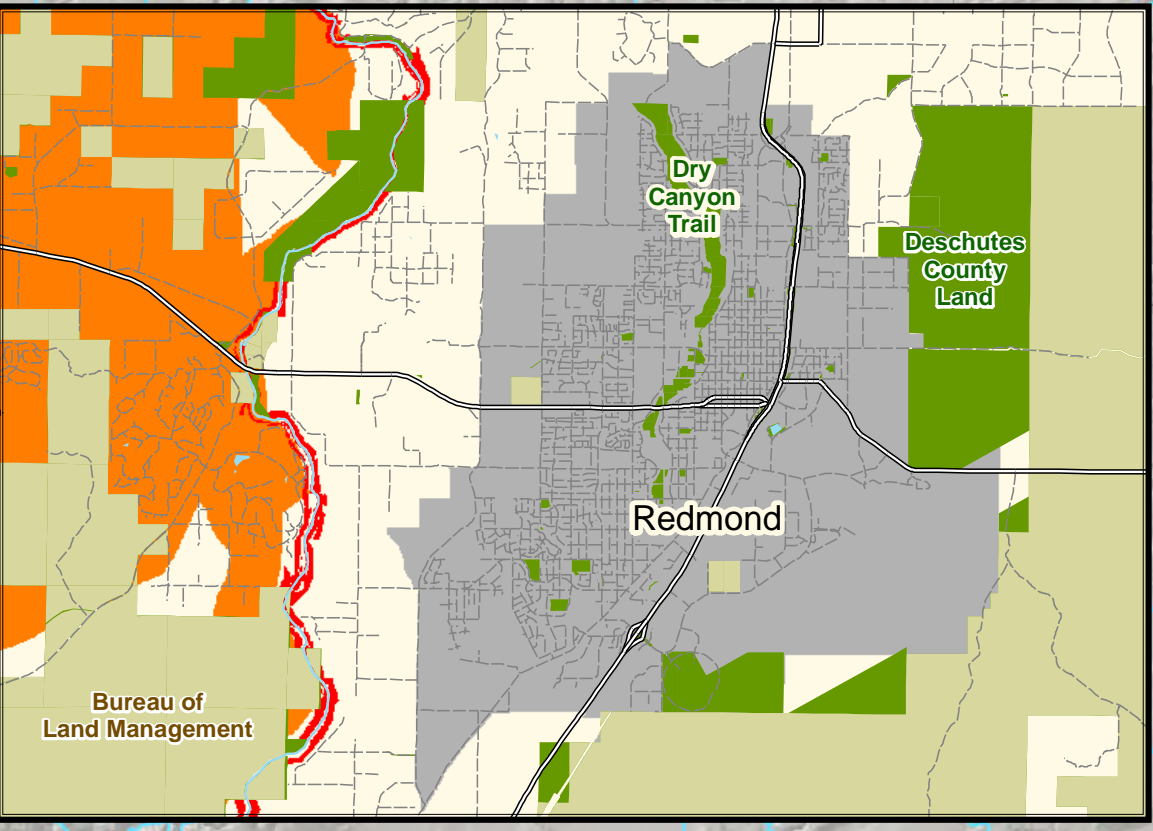
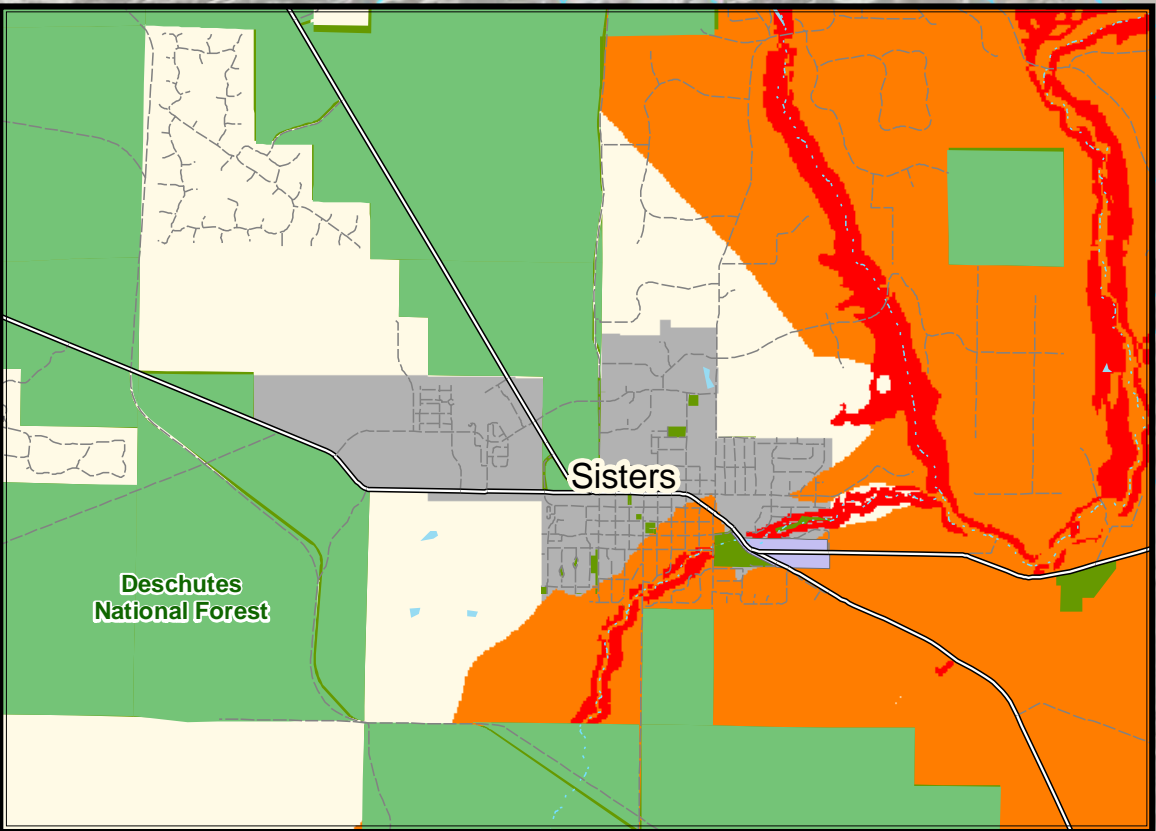
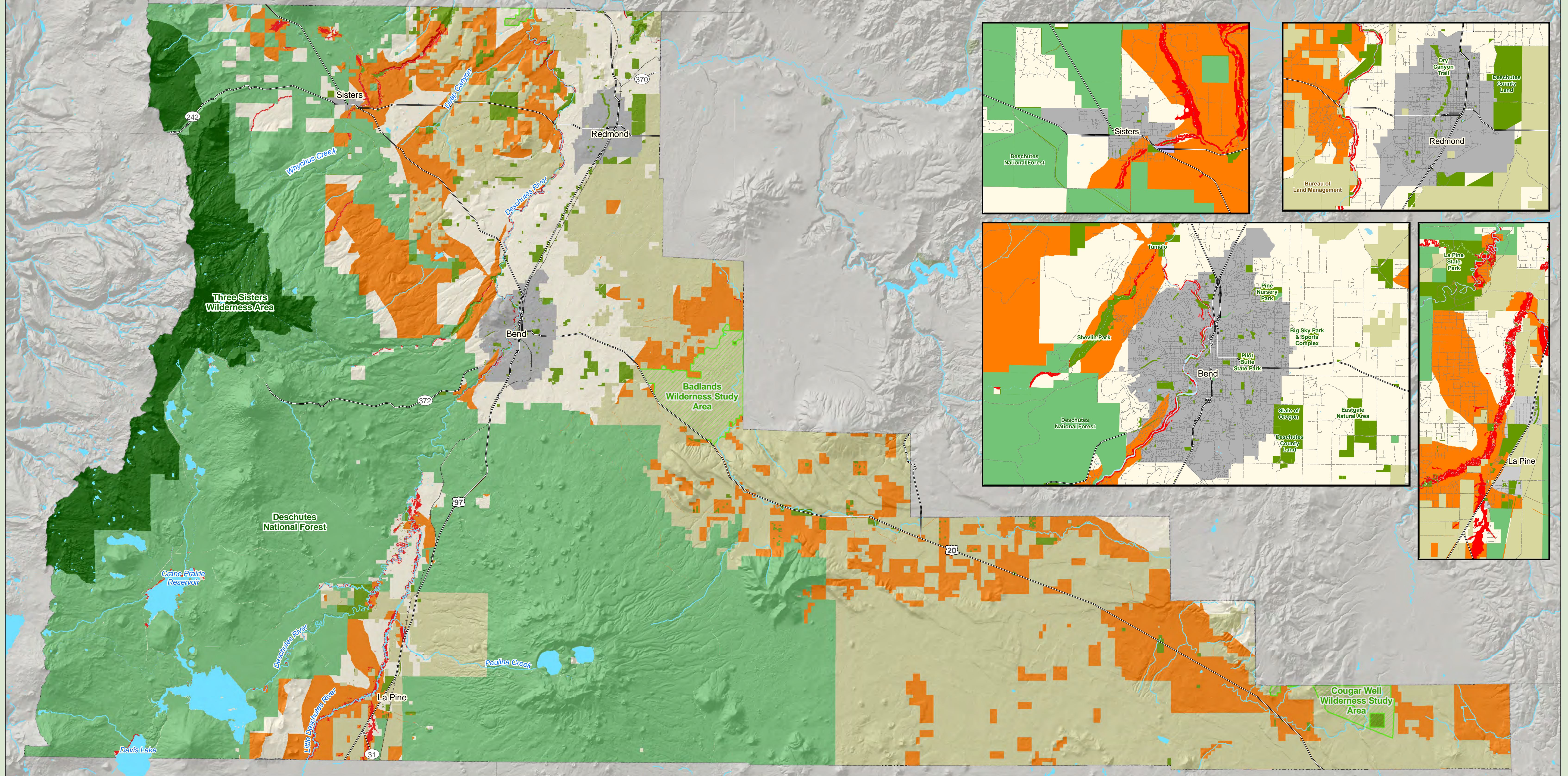


# Greenprint for Deschutes County

## Protect Habitat and Significant Ecological Areas



**Legend**

**Protect Habitat and Significant Ecological Areas Priorities**

- High Priority
- Moderate-High Priority

**Managed Land**

- Public Land\*\*
- Bureau of Land Management
- US Forest Service
- Wilderness Area
- Wilderness Study Area
- Urban Growth Boundary

**Water Features**

- Lake
- Perennial River
- Intermittent Stream
- Highway
- Railroads

\*\* Public Land are areas managed by city, county and state agencies. This includes Bend Parks and Rec, City of Sisters, City of Redmond, La Pine Parks and Rec, Central Oregon Parks and Rec, Deschutes County, and multiple agencies for the State of Oregon excluding Department of State Lands. Also included are easements held by Deschutes Land Trust.

This map displays priority areas for the Protect Habitat and Significant Ecological Areas goal in the Greenprint for Deschutes County. Areas across the county were evaluated using a 5 point scale. The degree of priority is shown using a color scale with red representing areas with a high priority score of 5, and dark orange for areas with a score of 4. Areas that received lower priority scores of 1, 2 and 3 are not shown. These priorities are the result of a weighted analysis on the following criteria:

Protect Wetlands	19 %	Protect Springs and Cold Water Refugia	9 %
Protect Riparian Corridors	18 %	Old Growth Forests	8 %
Protect Wildlife Movement Corridors and seasonal habitats	13 %	Identify Biodiversity Hot Spots	7 %
Protect River Confluences	12 %	Protect Grasslands	4 %
Protect Sensitive Species	10 %		

Map created by the Trust for Public Land on June 9, 2010

Created in ArcMap 9.3®  
Map Projection: NAD 1983 State Plane Oregon  
South FIPS 3602 Feet Intl

TPL, The Trust for Public Land, and The Trust for Public Land logo are trademarks of The Trust for Public Land.  
Copyright © 2010 The Trust for Public Land.  
www.tpl.org

Information on this map is provided for purposes of discussion and visualization only.

