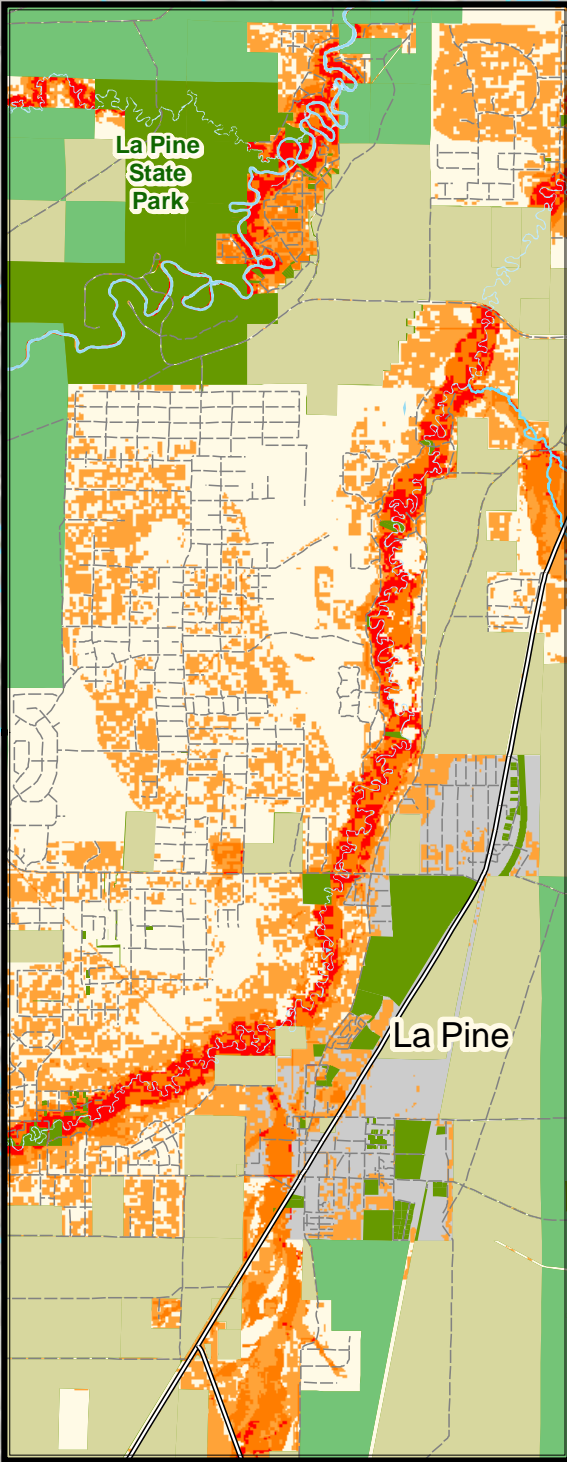
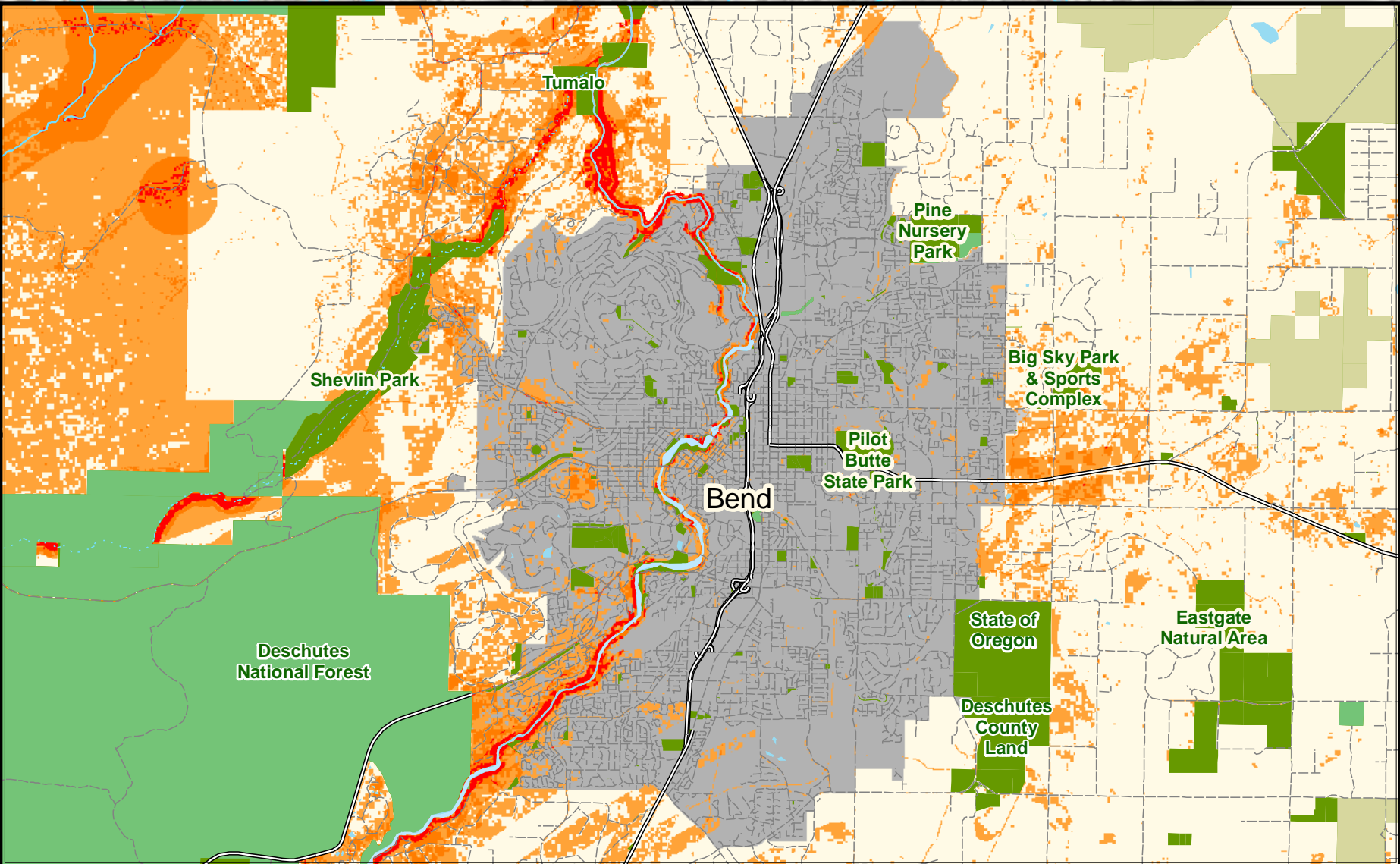
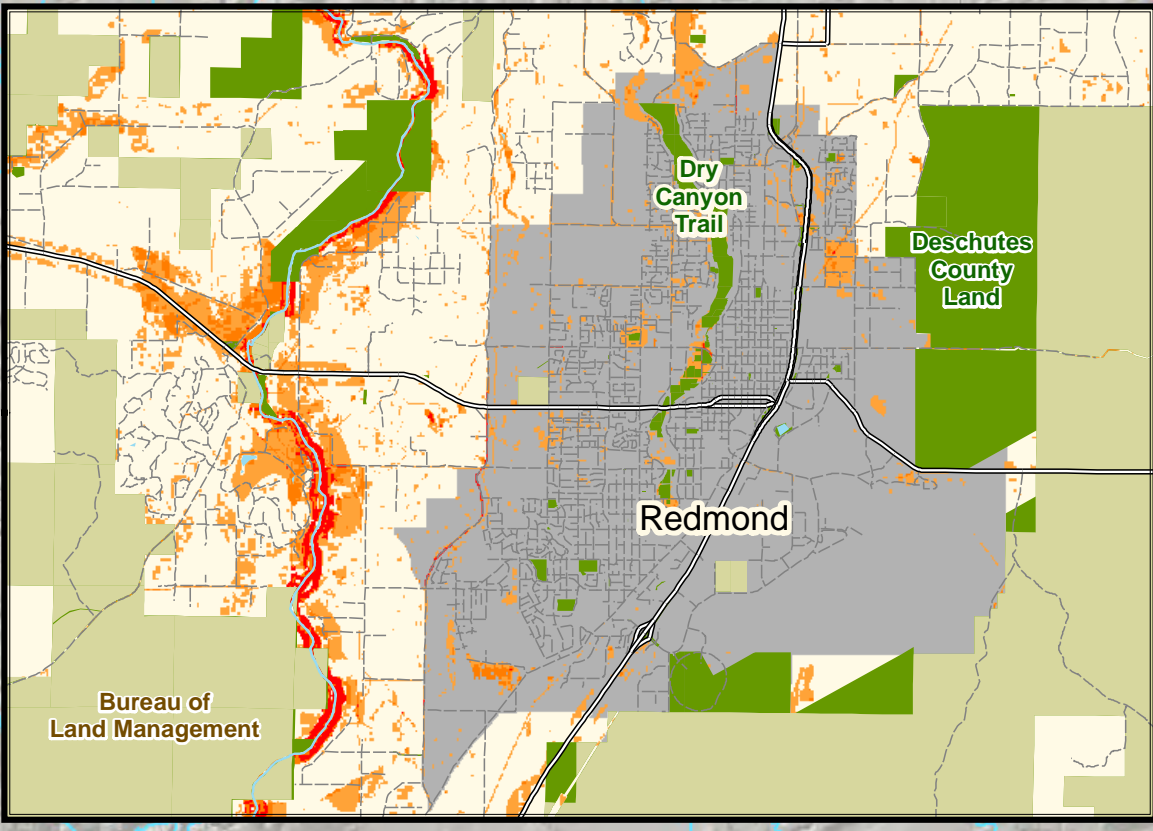
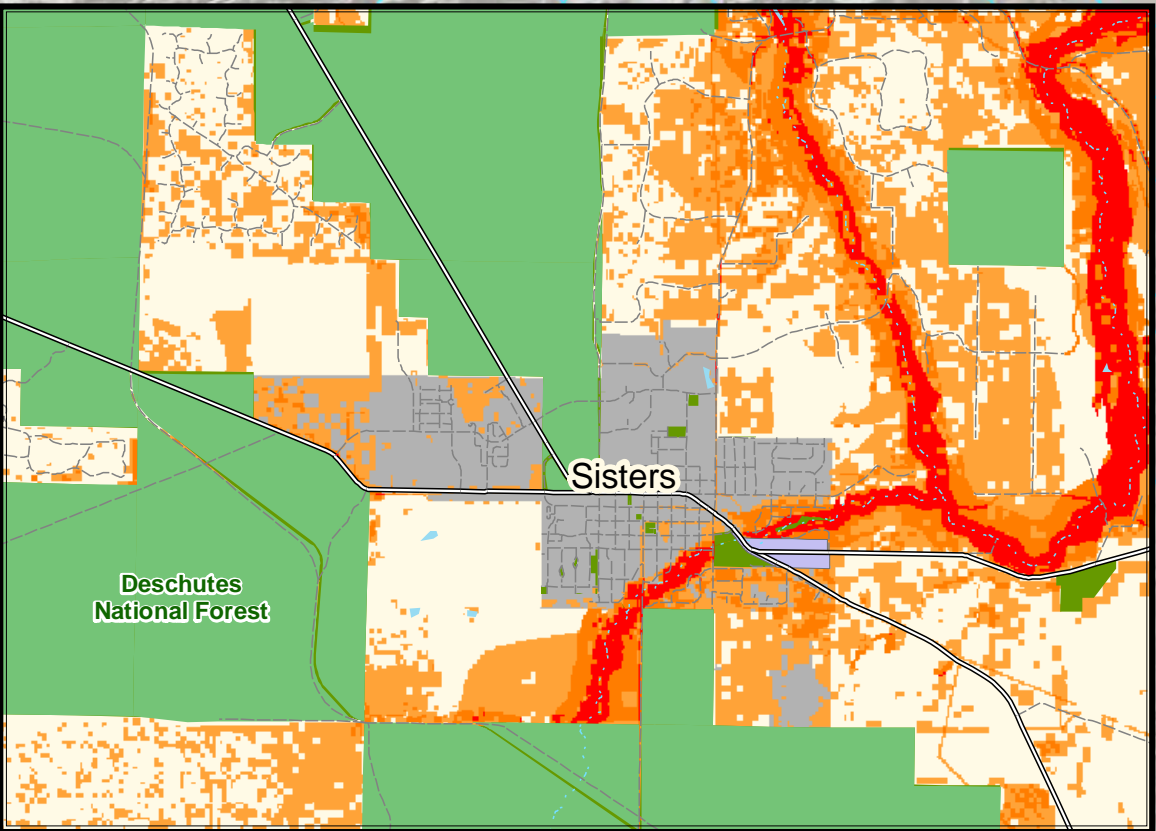
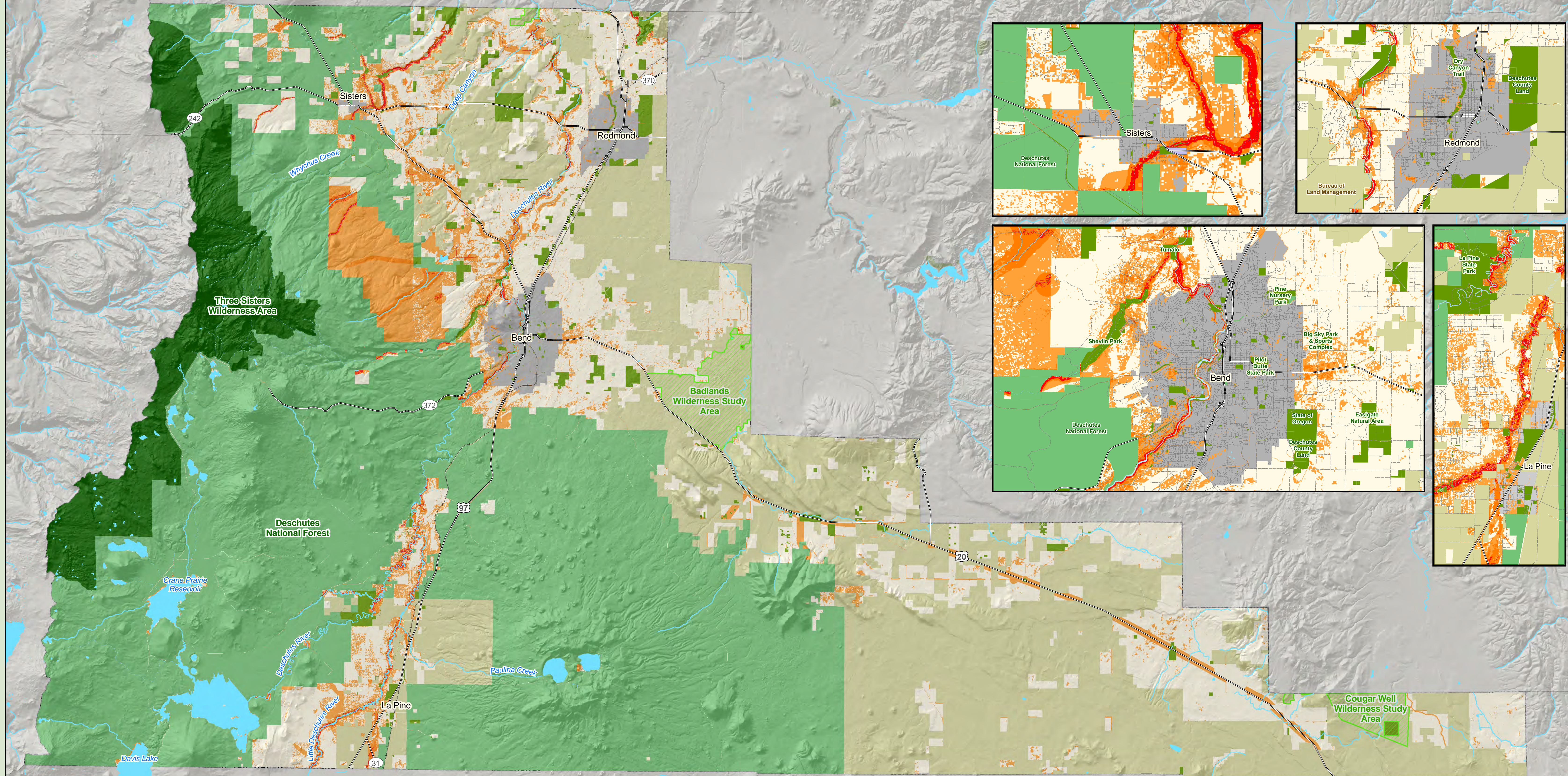


Greenprint for Deschutes County

Overall Conservation and Recreation Values



Legend

Overall Conservation and Recreation Values

- Highest Number of Goals Overlap
- Second Highest Number of Goals Overlap
- Third Highest Number of Goals Overlap

Managed Land

- Public Land**
- Bureau of Land Management
- US Forest Service
- Wilderness Area
- Wilderness Study Area
- Urban Growth Boundary

Water Features

- Lake
- Perennial River
- Intermittent Stream
- Highway
- Railroads

0 2.5 5 10 Miles

** Public Land are areas managed by city, county and state agencies. This includes Bend Parks and Rec, City of Sisters, City of Redmond, La Pine Parks and Rec, Central Oregon Parks and Rec, Deschutes County, and multiple agencies for the State of Oregon excluding Department of State Lands. Also included are easements held by Deschutes Land Trust.

This map displays the Overall Conservation and Recreation Values for the Greenprint for Deschutes County. The degree of value is shown using a color scale with red representing areas where the highest number of goals overlap, dark orange areas where the second highest number of goals overlap, and orange representing areas where the third highest number of goals overlap.

These values are the result of a weighted analysis on the following goals using values generated from the April 5, 2010 stakeholder meeting:

Protect Habitat and Significant Ecological Areas	15 %	Protect Forests Lands	10 %
Protect Water Quality	15 %	Protect Historic and Cultural Resources	10 %
Create Trails and Recreation Access Opportunities	15 %	Protect Scenic Viewsheds	10 %
Preserve Farm and Range Lands	15 %	Restore Degraded Habitat	10 %

Map created by the Trust for Public Land on June 9, 2010

Created in ArcMap 9.3®

Map Projection: NAD 1983 State Plane Oregon South FIPS 3602 Feet Intl

TPL, The Trust for Public Land, and The Trust for Public Land logo are trademarks of The Trust for Public Land. Copyright © 2010 The Trust for Public Land. www.tpl.org

Information on this map is provided for purposes of discussion and visualization only.

THE TRUST for PUBLIC LAND