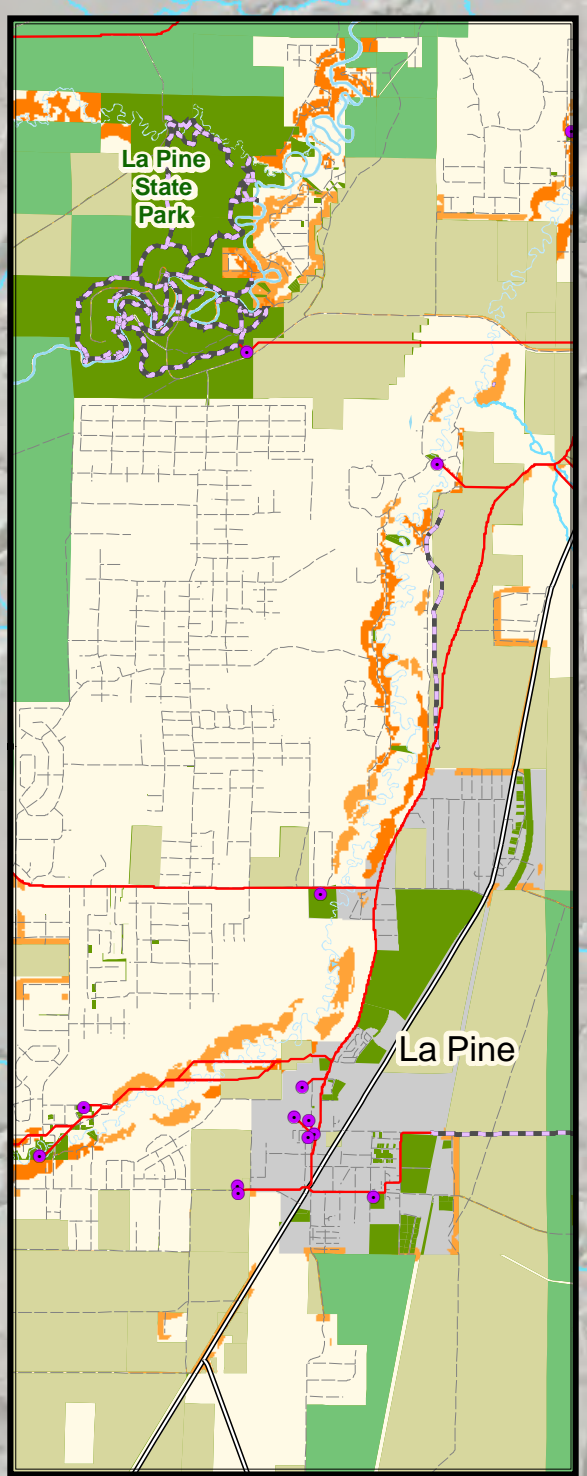
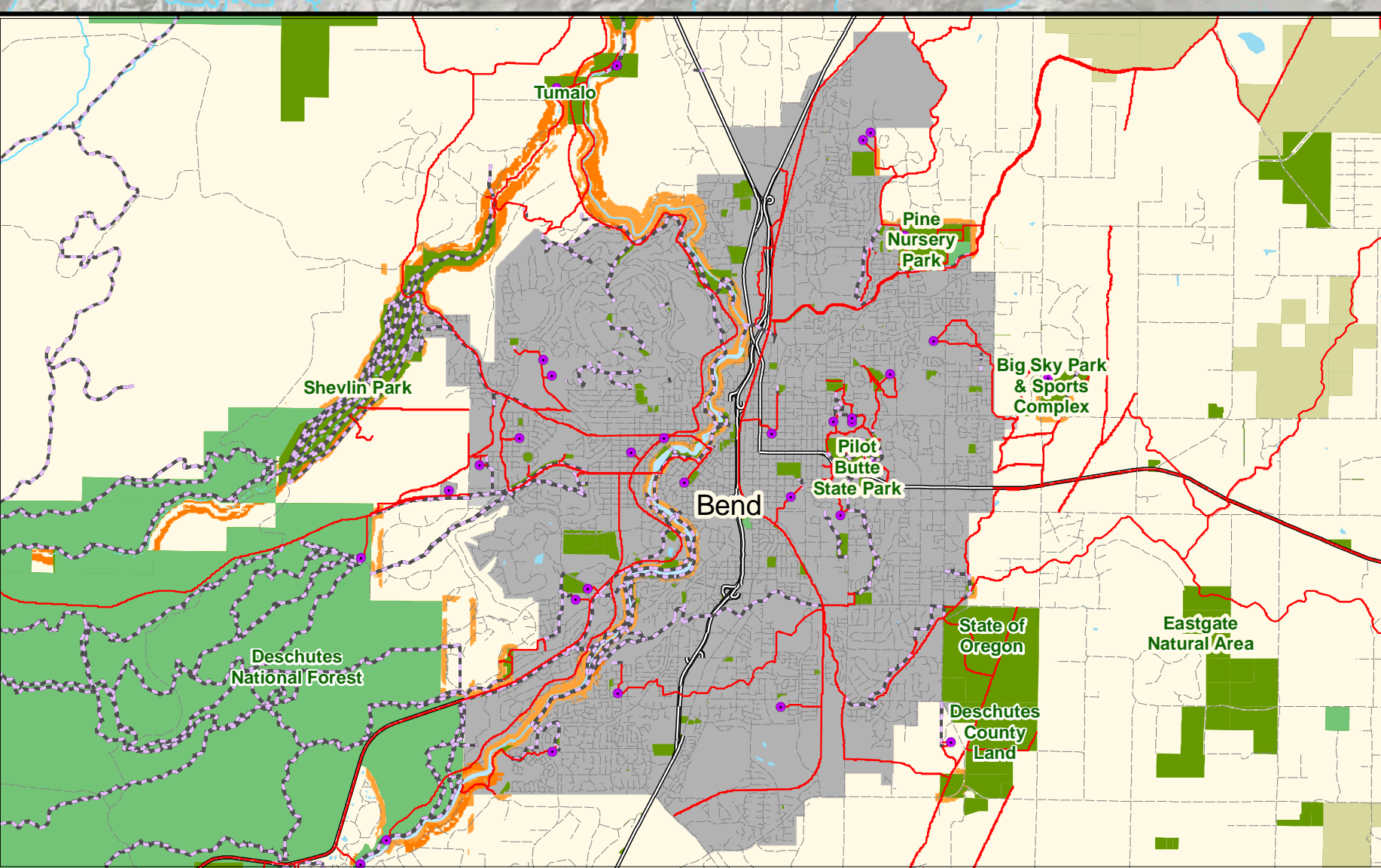
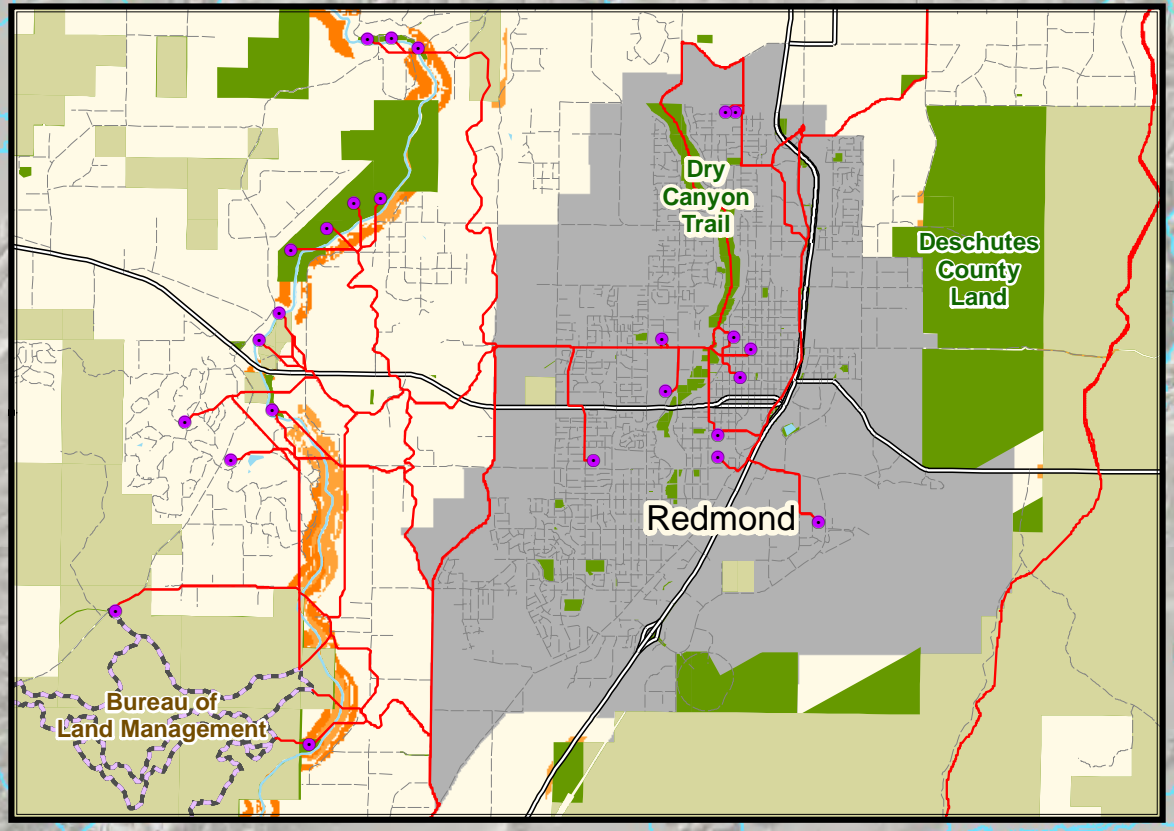
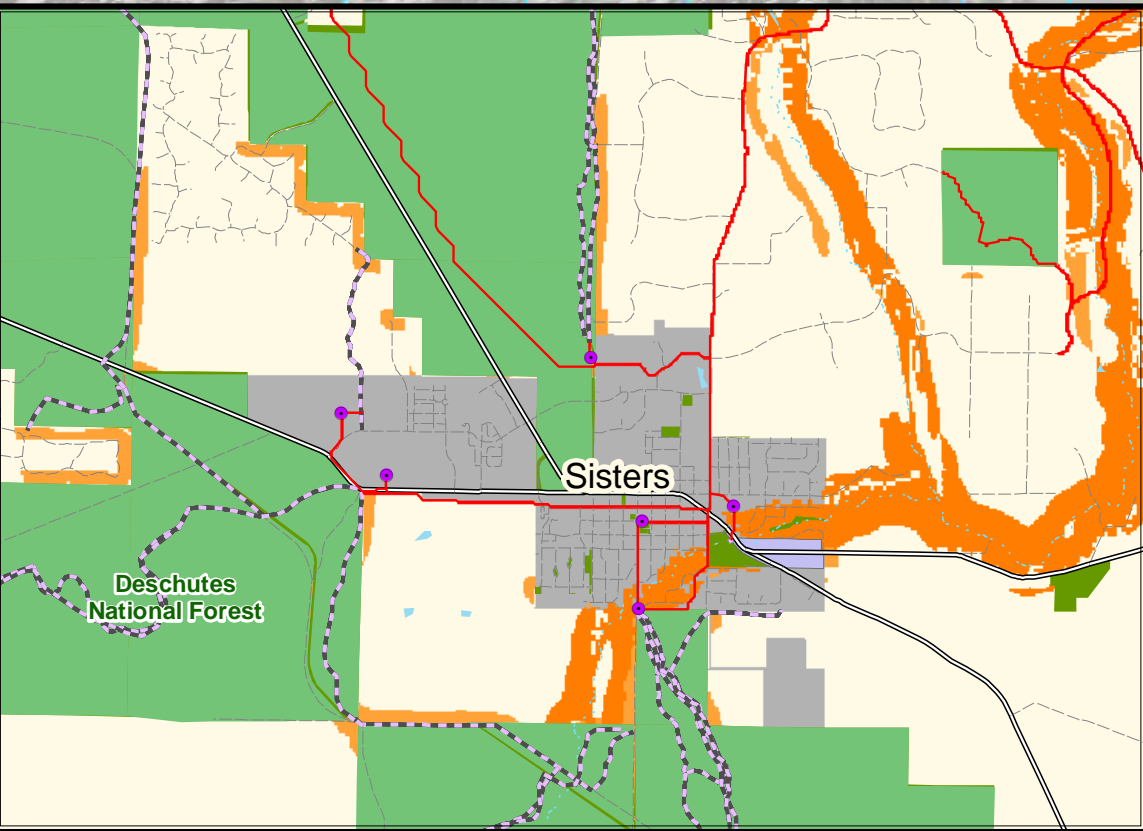
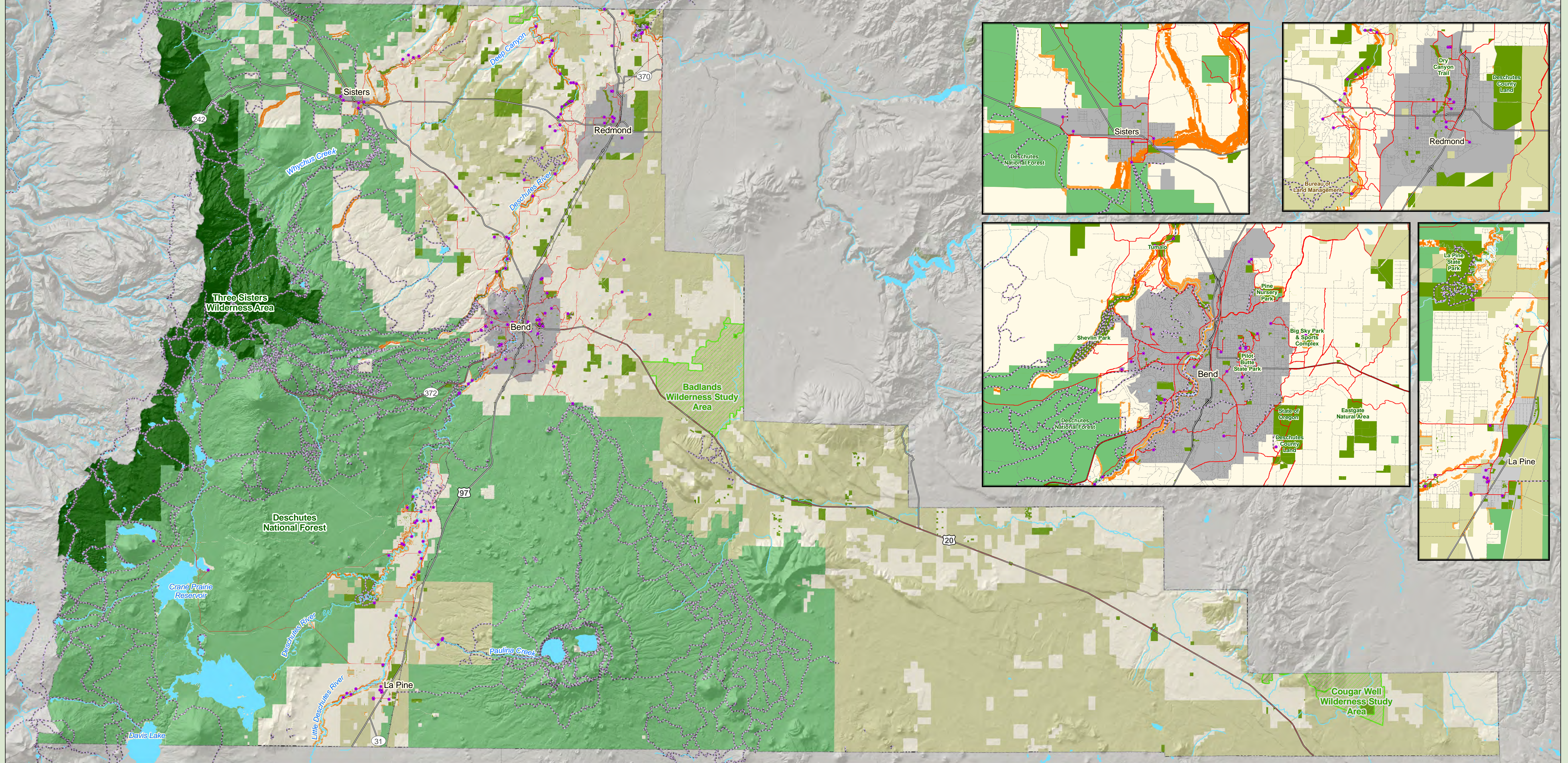


Greenprint for Deschutes County

Create Trails and Recreation Access Opportunities



Legend

Create Trails and Recreation Access Opportunities Priorities

- High Priority
- Moderate-High Priority
- Moderate Priority
- Existing Trail
- Trail Destination

Managed Land

- Public Land**
- Bureau of Land Management
- US Forest Service
- Wilderness Area
- Wilderness Study Area
- Urban Growth Boundary

Water Features

- Lake
- Perennial River
- Intermittent Stream
- Highway
- Railroads

** Public Land are areas managed by city, county and state agencies. This includes Bend Parks and Rec, City of Sisters, City of Redmond, La Pine Parks and Rec, Central Oregon Parks and Rec, Deschutes County, and multiple agencies for the State of Oregon excluding Department of State Lands. Also included are easements held by Deschutes Land Trust.

This map displays priority areas for the Create Trails and Recreation Access Opportunities goal in the Greenprint for Deschutes County**. Areas across the county were evaluated using a 5 point scale. The degree of priority is shown using a color scale with red representing areas with a high priority score of 5, dark orange areas have a score of 4 and orange representing areas with a moderate priority score of 3. Areas that received low priority scores of 1 and 2 are not shown.

These priorities are the result of a weighted analysis on the following criteria:

Trail Connectivity	30 %
Access to River Corridors	25 %
Provide access to active Recreation Areas	20 %
Provide access to Natural Areas	14 %
Consider places for Educational/Interpretive Opportunities	11 %

**** Results from the “Create Trails and Recreation Access” goal show potential opportunity areas for creating new trails and/or recreation access. Information on this map is provided only for the purpose of discussion.**

Map created by the Trust for Public Land on June 9, 2010

Created in ArcMap 9.3®

Map Projection: NAD 1983 State Plane Oregon South FIPS 3602 Feet Intl

TPL, The Trust for Public Land, and The Trust for Public Land logo are trademarks of The Trust for Public Land. Copyright © 2010 The Trust for Public Land. www.tpl.org

Information on this map is provided for purposes of discussion and visualization only.

THE TRUST for PUBLIC LAND